



rodriguezpons &partners

Architecture Engineering Master Planning Landscaping Interior Design

www.rodriguezpons.com



Rodriguez Pons & Partners is a group of architects and designers who consistently pushes the boundaries of architecture and urban design.

The office work experiments with spatial quality, in the pursuit of a visionary aesthetic that encompasses all fields of design, range from urban scale through architectural design to sophisticated details.

As an international architectural firm Rodriguez Pons & Partners is active in the broadest fields of architecture. The intention is to make a significant contribution to the discipline of architecture, to continue to develop qualities with respect to design, technology and knowledge. Mutually, sustaining the environment, market demands and client wishes enable the work, and the aim is to get results in which designers goals and client's goals overlap.

The atmosphere within the office is international, multidisciplinary and ambitious, but also open, team based and friendly, with attention to personal well being, knowledge development and career planning.

Marcello Rodriguez Pons chairman and founder of Rodriguez Pons & Partners and has been working for many years at HCP Architecture & Engineering as Project Director and Architect; some of the projects developed at that time are also shown in this document.

Core range of services includes:

- Architecture
- Engineering
- Master Planning
- Landscaping
- Interior Design

"Rodriguez Pons & Partners aims to do elegant and efficient buildings to grace cities around the globe."

Rodríguez Pons & Partners es un grupo de arquitectos y diseñadores que constantemente empuja los límites de la arquitectura y el diseño urbano.

La oficina experimenta en sus trabajos con calidad espacial, en la búsqueda de una estética visual que abarca todos los campos del diseño, que van desde la escala urbana pasando por el diseño arquitectónico y llegando hasta sofisticados detalles.

Como una firma internacional de arquitectura Rodriguez Pons & Partners está activo en los campos más amplios de arquitectura. La intención es hacer una significativa contribución a la disciplina de la arquitectura, y continuar el desarrollo de cualidades en cuanto a diseño, tecnología y conocimiento. Simultáneamente, preservar el medio ambiente, las demandas del mercado y los deseos del cliente generan el trabajo, y la meta es obtener resultados en que los objetivos de los diseñadores y los objetivos del cliente se superpongan.

La atmósfera dentro de la oficina es internacional, multidisciplinaria y ambiciosa, pero también abierta, basada en trabajo en equipo y acogedora, con atención al bienestar personal, el desarrollo del conocimiento y la planificación de las carreras.

Marcello Rodríguez Pons presidente y fundador de Rodríguez Pons & Partners ha trabajado durante muchos años en HCP Arquitectura e Ingeniería como Director de Proyectos y Arquitecto; algunos de los proyectos desarrollados en ese momento también se muestran en este documento.

Los principales servicios incluyen:

- Arquitectura
- Ingeniería
- Master Plan
- Paisajismo
- Diseño de Interiores

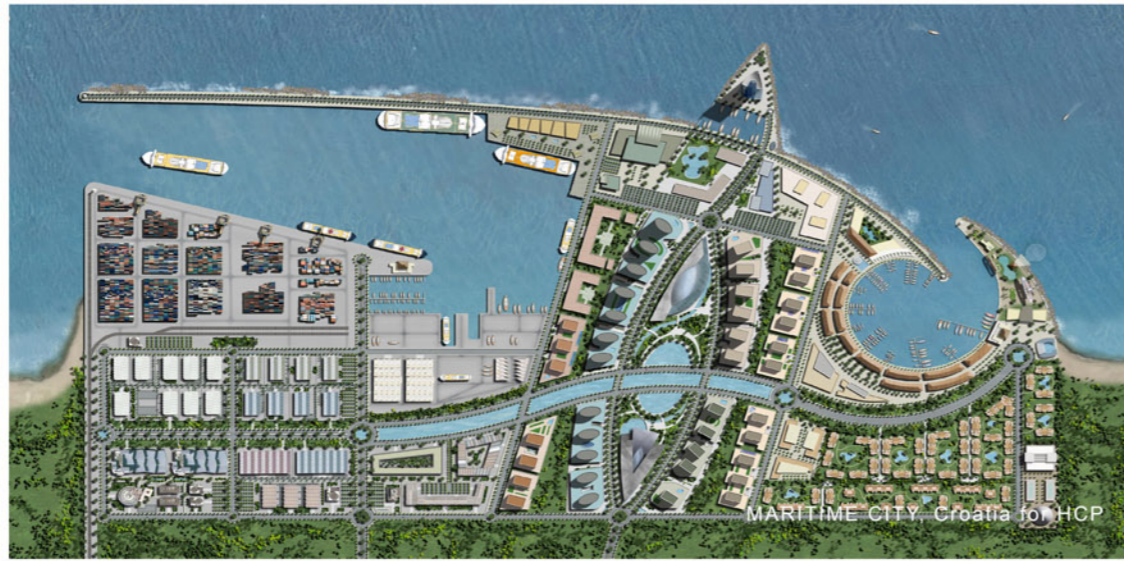
"Rodríguez Pons & Partners intenta hacer edificios elegantes y eficientes para agazajar a las ciudades alrededor del mundo."



Master Plan

Rodriguez Pons & Partners has been developing for years together with government agencies and private developers the master plan of new city areas. Prepares the instrument that analyses a particular site's current urban situation and context, and determines its future development, establishing for this purpose, areas for the different uses, services and infrastructures.

Rodriguez Pons & Partners desarrolla desde hace años junto entidades gubernamentales y desarrolladores privados el master plan de nuevos sectores de ciudad. Prepara el instrumento que analiza la situación urbana actual de un sitio y contexto determinado y marca su desarrollo futuro, concretando para ello, las zonas destinadas a los distintos usos del suelo, servicios e infraestructuras.



Residential

Rodriguez Pons & Partners residential architecture creates new living environments with the foundation of up-to-date and cross-cultural market knowledge. It designs with functional ingenuity, proposes unique spaces and presents exteriors that define architectural personality and contribute to the character of the city in which they are built.

La arquitectura residencial de Rodriguez Pons & Partners crea nuevos ambientes para vivir, con el conocimiento del mercado y sobre una base moderna y de relación entre culturas. Diseña con ingenio funcional, propone espacios únicos y presenta exteriores que definen la personalidad arquitectónica y contribuyen al carácter de la ciudad en la que se construyen.



ABASTO RESIDENCIAL, Cordoba, Argentina for HCP



DANNAT RESORT, Half Moon Bay, Saudi Arabia for HCP



PLAYBOY MARINA & RESORT, Argentina



CASABLANCA HILLS, Casablanca, Morocco for HCP



VILLA EUCALIPTUS, Villa Carlos Paz, Argentina

Hotels

Rodriguez Pons & Partners designs hotels that redefine the guest experience and provide unique market identity. Its exterior designs tell a story about the place and establish identity in this competitive field. Its interior designs create comfortable yet memorable spaces.

Rodriguez Pons & Partners diseña hoteles que redefinen la experiencia del cliente y proporcionan una identidad única en el mercado. Su diseño exterior cuenta una historia sobre el lugar y establece una identidad en este competitivo campo. Su diseño de interiores crear espacios confortables y memorables.



PEOPLE SQUARE HOTEL, Heifei, China for HCP



PATIO HOTEL, Doha, Qatar for HCP



VALLE PATAGONIA POLO CLUB + BOUTIQUE HOTEL, Puerto Varas, Chile

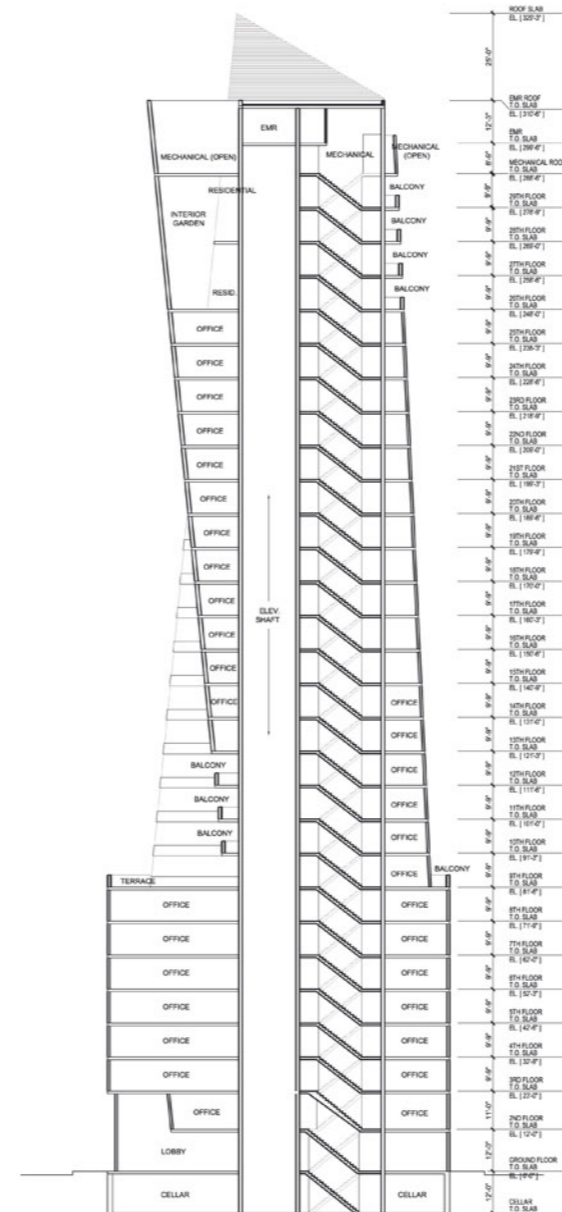


LA CUMBRE HILLS Resort Golf & SPA, La Cumbre, Argentina
design partner with Palermo - Vucovich

Offices + Retail

Rodriguez Pons & Partners creates office environments and retail architecture that define the destination and enhances the experience. Its exterior designs establish identity, deliver the message of the workplace and the shopping excellence. Its interior designs provide memorable space, clarity of circulation, visual stimulation, public perception, new technologies and sustainability.

Rodriguez Pons & Partners crea entornos de oficina y de arquitectura comercial que definen el destino y mejora las experiencias. Sus diseños exteriores establecen la identidad de los lugares, entregan el mensaje de los espacios de trabajo y la excelencia comercial. Sus diseños de interiores ofrecen un espacio memorable, claridad de la circulación, estimulación visual, percepción pública, nuevas tecnologías y sostenibilidad.



Leisure + Sport

Public assembly architectural spaces for leisure and sport are linked to the success in creating by the user a strong sense of "space". Through powerful and innovative solutions Rodríguez Pons & Partners strives to interweave function with aesthetics, tailoring each and every project to the individual needs. Balance between architecture and landscaping are a must for this type of projects.

La arquitectura de espacios públicos para el ocio y el deporte están relacionados con el éxito a través de la creación por parte del usuario de un fuerte sentido del "espacio". A través de soluciones potentes e innovadoras Rodríguez Pons & Partners se esfuerza por entretener la función con la estética, adaptando cada proyecto a las necesidades individuales. Equilibrio entre la arquitectura espacios verdes y el paisaje son una necesidad para este tipo de proyectos.



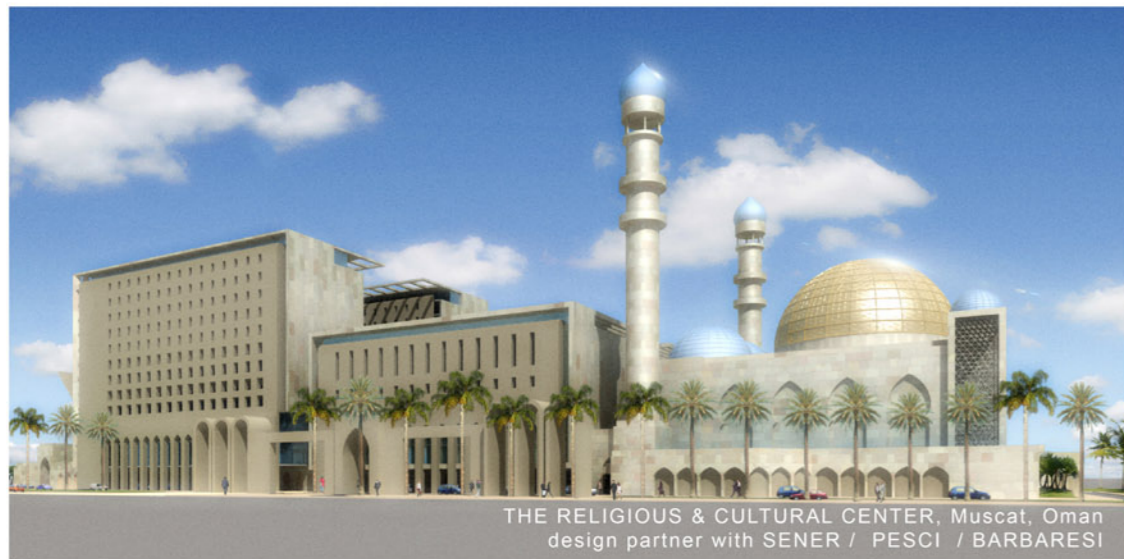
Marinas + Waterfronts

Urban parks, green spaces and waterfronts are necessities, not niceties. Parks, waterfronts and marinas are not only places to experience nature, but are also places for social and cultural exchange, not to mention places that can define the communities they serve. Rodriguez Pons & Partners are passionate in the commitment to the communities where we live, work and play.

Los parques urbanos, zonas verdes y paseos marítimos son una necesidad, no sutilezas. Parques, puertos y marinas no son sólo lugares para vivir la naturaleza, sino que también son lugares de intercambio social y cultural. Rodríguez Pons & Partners están apasionados en el compromiso con las comunidades donde vivimos, trabajamos y jugamos.



Mixed Use Buildings



Rodriguez Pons & Partners is leader in the mixed use buildings field. It is renowned for unique and iconic architecture and progressive interior planning. Its exterior designs are landmarks in the skyline. Its interior designs address contemporary lifestyles and explore new ways to improve private spaces as well as shared public functions.

Rodriguez Pons & Partners es líder en el campo de edificios de uso mixto. Es reconocido por arquitectura única e icónica y la planificación interior progresiva. Su diseño exterior los convierte en hitos en el perfil urbano. Su diseño de interiores aborda el estilo de vida contemporáneo y explora nuevas formas para mejorar los espacios privados, así como compartir las funciones públicas.



Resorts

The Rodriguez Pons & Partners resorts design group spans the full range of resorts options, from developments in Brazil, Spain, Cape Verde Islands up to Saudi Arabia. At the heart of each design process lies the desire to create meaningful and dynamic environments for each individual client, we work with them to get out the maximum potential of each space.

El grupo de diseño de resorts de Rodríguez Pons & Partners abarca toda la gama de opciones de resorts, de Brasil, España, Islas de Cabo Verde hasta Arabia Saudita. En el corazón de cada proceso de diseño se encuentra el deseo de crear un entorno significativo y dinámico para cada cliente, trabajamos con ellos para conseguir el máximo potencial de cada espacio.



Key Project List

Master Plan

Adriatic Casino & Resort Albania, Albania
Playboy Marina & Resort, Argentina
Valle Patagonia, Chile
Maritime City, Croatia
Dannat Resort, Saudi Arabia
Grand Natal Golf, Brasil

Residential

Villa Eucaliptus, Argentina
Playboy Marina & Resort, Argentina
Abasto Residencial, Argentina
Rawahi Building, Oman
Casablanca Hills, Morocco
Edificio Mirasierra, Spain

Hotels

Valle Patagonia Polo Club Boutique Hotel, Chile
ACRA Towers, Albania
La Cumbre Hills, Argentina
Patio Hotel, Qatar
Al Jawda Tower, Libia
Sea Forest, Rumania

Offices + Retail

Parque Empresarial Aeropuerto, Argentina
SIVA Building NY, New York, USA
Valle Patagonia Portal de Acceso, Chile
Amwaj Park District, Bahrain
People Square, China
Dannat Mall, Al Khobar, Saudi Arabia

Leisure + Sport

Centro Cultural de la Nacion, Argentina
Playboy World, China
Alcaidesa Universidad del Golf, Spain
Amwaj Beach Club, Bahrain
Equestrian City, Bahrain
Baviera Golf Club House, Spain

Marinas + Waterfronts

Playboy Marina & Resort, Argentina
Durrat Marina Yacht Club, Bahrain
Porto Vista Marina & Resort, Albania
Ferrari Road, Bahrain
Alnaham Corniche, Bahrain
San Fernando, Spain

Mixed Use Buildings

Central District, Albania
The Religious & Cultural Center, Oman
Bahrain National Theatre & Museum, Bahrain
Marina Park, Rumania
Multimedia World District, GCC
People Square, China

Resorts

Complejo Don Carlos, Argentina
Dunas Beach Resort, Cape Verde
Manoa Park, Brasil
El Kalat, Morocco
Olivar Resort, Senegal
Elegance Natal Golf, Brasil

Note: All these master plans, projects and concept images have been developed during the last years at the offices of RODRIGUEZ PONS & Partners and / or collaborating as Project Director for HCP Architecture & Engineering.

Design Awards

2014

FIRST PRIZE @ WORLD ARCHITECTURE AWARDS 2014 w/ **Playboy Marina & Resort**, Argentina - 15th Cycle
Prize given by the World Architecture Community in New York, USA

Valle Patagonia Polo Club + Boutique Hotel, Chile. Unlike a typical hospitality building with social activities + hotel rooms, this building incorporates additionally to that the polo club house activities + the grand stand in the same building.
Shortlisted WORLD Top 3 at Cityscape Awards in the Leisure & Tourism Award Category - Dubai 2014

2013

FIRST PRIZE @ WORLD ARCHITECTURE AWARDS 2013 w/ **Central District**, Albania - 13th Cycle
Prize given by the World Architecture Community in New York, USA

Three conventional buildings holding university, hospital and offices were joint forming a non conventional multiuse building
Centro Cultural de la Nacion, Argentina. The National Cultural Center provides a public space for culture & art creation and exhibition.
Citation at the World Architecture Community in New York, USA - 14th Cycle

2012

Playboy Marina & Resort, Córdoba, Argentina. Tourism resort with 114 residential units designed on a small cliff overlooking San Roque Lake
Highly Recommendation Award (Shortlisted WORLD Top 3) at Cityscape Awards - World Architecture Congress Dubai 2012
This Award in Dubai was in the Residential Project - Future category for unbuilt projects
Shortlisted at The International Architecture Awards 2012, Dublin, Ireland
Shortlisted at The Chicago Atheneum 2012, Chicago, USA
Preselected for MIPIM Awards 2012 in the Best futura project category, Cannes, France

Central District master plan and building project at Fier, Albania.
Three conventional buildings holding university, hospital and offices were joint forming a non conventional multiuse building
Two Highly Recommendation Awards (Shortlisted WORLD Top 3) at Cityscape Awards - World Architecture Congress Dubai 2012
These Awards in Dubai were in the Commercial and Mixed-Use Project Future category, and in the Community & Culture Project - Future category, both of them for unbuilt projects

2011

Dunas Beach Resort project, Cape Verde by HCP Architecture & Engineering
Shortlisted at Cityscape Awards in the Tourism, Travel & Transport, Future Projects Category - Dubai 2011

Durrat Marina Yacht Club project, Bahrain by HCP Architecture & Engineering
Shortlisted at Cityscape Awards in the Tourism, Travel & Transport, Future Projects Category - Dubai 2011

Bahrain National Theatre & Museum for the Minisrty of Education, Bahrain by HCP Architecture & Engineering
Finalist in the International design competition. Auditorium and Conference Hall of 6.000m2 for 1.500 people

2010

Durrat Marina Yacht Club, Bahrain by HCP Architecture & Engineering
First Prize Competition for 15.000m2 built up area which includes the Club, sailing school, coastguard and dry stack facilities
“15 Biggest International Architectural Practices” CEO Middle East Magazine, Dubai, named HCP with this distinction

2009

Amwaj Park District project, Bahrain by HCP Architecture & Engineering
First Prize private design competition for the Master Plan in Amwaj Park District

2008

Amwaj Boutique Hotel, Bahrain by HCP Architecture & Engineering
First Prize private design competition for the 140 rooms hotel, villas and restaurants



Offices

SOUTH AMERICA

Luis de Tejada 4212
Cerro de Las Rosas - X 5009 CER
Córdoba
ARGENTINA

NORTH AMERICA

384 Fifth Avenue, 4th Floor
Manhattan
NY 10018, New York
UNITED STATES

EUROPE

Paseo de Reding 43, 1º izquierda
29016, Málaga
SPAIN

MIDDLE EAST

Delmon Tower B, Government Avenue, office 61
Manama
BAHRAIN

Contact

info@rodriguezpons.com
www.rodriguezpons.com

